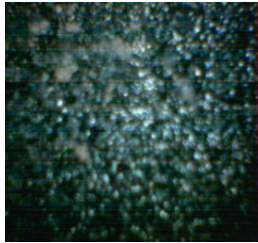


DeCarbonization

- ❖ Continuous removal of carbon deposits from engine chambers during exhaust cycles,
- Thereby engine chambers are perpetually clean to support maximum combustion with increase torque and power, lower fuel consumption and reduce emission pollution.



Endoscope



Carbon deposits at 81,000km



After 1 hour with Max-Zone

Fuel Saving

Nissan Latio Fuel Saving 2011					
Route: Kitchener Road~NTU/Jalan Bahar~Kitchener Road.					
Without Max-Zone					
Date	Dist	Liter	KPL	FCost	KPLI%
13/5-17/5	244	20.4	12.00	39.2	-
With Max-Zone-GT-4					
20/5-11/6	1581	114.8	13.77	226.00	14.6%
KPLI% - KmPerLiter Improvement % with Max-Zone is 14.6%					

Fuel saving depends on vehicle condition, road/weather conditions, driving habit and fuel quality.

Max-Zone 4th Generation

MZ~GT-4 0.6L to 1.6L



MX~GTS-4 1.8L to 3.0L



MZ~GTSX-4 3.0L to 6.0L



Equipment Engineering Pte Ltd
 Tel: (65) 68979909 Fax: (65) 68979798
 Website: <http://www.eesingapore.com>

Domestic

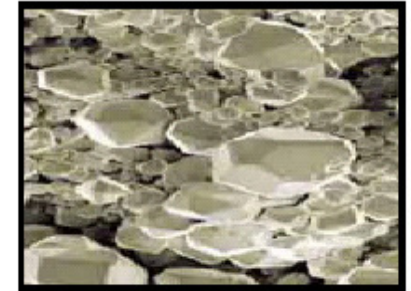
Sam Ho, HP: (65) 96227844,
 Email: samhothai@yahoo.com

International

P.T Loh, HP: (65) 91886160
 Email: eesapore@pacific.net.sg

Desulfation

Desulfates battery from weak to strong in minutes.



Sulfation without Max-Zone
 12.24V = 1.185SG = 60% Charge



Desulfation with Max-Zone
 12.62V = 1.248SG = 90% Charge

Max~Zone 4in1 Actions

Action #1 desulfates and rejuvenates battery to 90% charge – prolong battery life,

Action #2 magnetizes air-fuel mixture – pre-condition combustion,

Action #3 multi-sparks ignition – eliminates misfires,

Action #4 decarbonizes engine cylinder walls, pistons, intake and exhaust valves, injector nozzles and spark plugs to clean surfaces to support near complete combustion.

When the engine is running Max~Zone will continuously **desulfate** battery to strong charge and **deCarbonize** chambers (get rid-off carbon deposits perpetually) for maximum clean combustion.

Primary Expectations

❖ Torque & Power Increase

- Wheel traction – increase, safer driving
- Acceleration – smoother
- Auto transmission – gear change smoother
- Higher Speed – lower rpm
- Engine noises – lower
- Emission pollutions – lower

❖ Fuel Saving

- ☐ City driving – up to 10%
- ☐ Highway driving – up to 20%
- ❖ Fuel saving depends on vehicle condition, road and weather conditions, driving habits and fuel quality.

❖ Battery

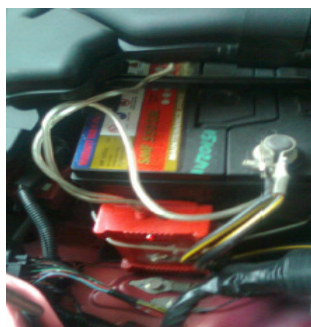
- Desulfates battery – extra life

Secondary Expectations

- Gasoline, gasohol, LPG, CNG, Diesel
- Air-condition – higher efficiency
- Audio system – louder & clearer
- Auto-window – smoother
- Lighting – brighter, safety
- Power steering – smoother
- Security alarm – louder
- Windscreen wiper – smoother
- Reduces repair cost – less wear & tear.

Installation Guide

- Switch **OFF** engine **REMOVE** key,
- Mount the Max-Zone on the side of the battery with cable-ties or L bracket on car body,
- Loosen #10 or #12 nuts,
- ❖ **Red** wire goes to **+V**,
- ❖ **Black** wire goes to **-V**,
- ❖ **Tighten** battery nuts,
- Start engine and increase idle speed to 2000 rpm for **3** minutes, LED turns **ON** Max~Zone in action,
- When engine is **OFF**, LED will go **OFF** after awhile, then Max~Zone draws no power.



Cable-tie On Battery



L Bracket On Car Body

Specifications

Operating Voltage	: 12V DC
Wattage	: 6W – 8W
Dimension	: 110x80x35 mm
Weight	: 400 gm
Turn-on Voltage	: 13.00V
Turn-off Voltage	: 12.85V

Max~Zone 4th Generation



Equipment Engineering PT Ltd

Battery Guide				
Condition	Strong			
State-Of-Charge %	100	90	80	70
Specific Gravity	1.265	1.248	1.228	1.207
Battery Voltage	12.73	12.62	12.50	12.37
Condition	Weak		Cannot Crank	
State-Of-Charge %	60	50	40	30
Specific Gravity	1.185	1.162	1.138	1.114
Battery Voltage	12.24	12.10	11.96	11.81